



GAT MONTHLY MEMBERSHIP PROGRESS REPORT

Results as of: 3/31/2022

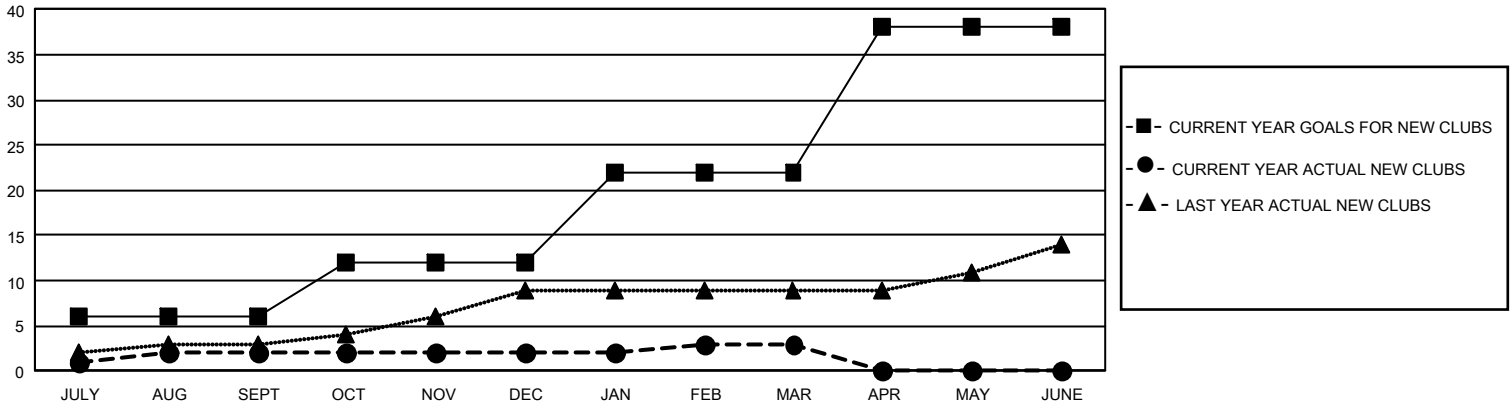
GMT Constitutional Area 1, Group D

REPORT DOES NOT INCLUDE CLUBS IN UNDISTRICTED AREAS.

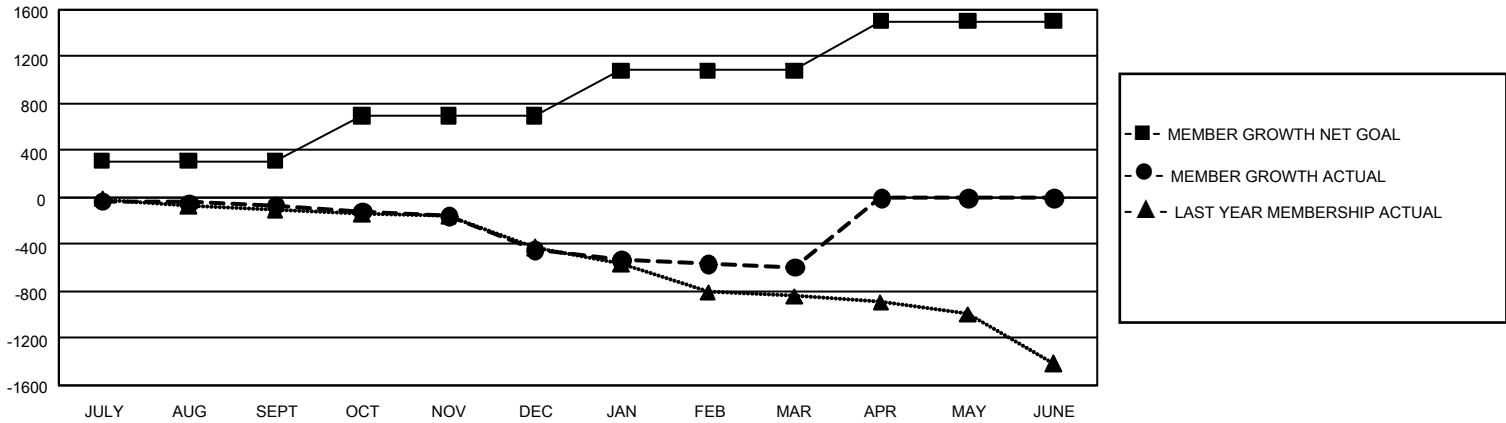
Clubs			
RESULTS FOR 2021-2022			
QUARTER	NEW CLUB GOAL	NEW CLUBS	DROPPED CLUBS
JULY/AUG/SEPT	18	2	15
OCT/NOV/DEC	18	0	5
JAN/FEB/MAR	30	1	10
APR/MAY/JUNE	48	0	0

Members			
RESULTS FOR 2021-2022			
QUARTER	MEMBER GROWTH NET GOAL	MEMBER GROWTH ACTUAL	DROPPED MEMBERS ACTUAL (including transfers)
JULY/AUG/SEPT	309	705	641
OCT/NOV/DEC	389	520	866
JAN/FEB/MAR	384	589	668
APR/MAY/JUNE	424	0	0

GOALS AND ACTUAL NEW CLUBS CUMULATIVE



GOALS AND ACTUAL MEMBERS CUMULATIVE



DROPPED CLUBS: 30	521 CLUBS OF 1,071 ADDED 1 OR MORE NEW MEMBERS	<u>GENDER DISTRIBUTION</u>	
		MALE 17,549 (67.41%) FEMALE 8,482 (32.58%) NON BINARY 0 (0.00%) PREFER NOT TO ANSWER 2 (0.01%)	
<u>DROPPED MEMBERS</u>		CLICK HERE FOR CUMULATIVE MEMBERSHIP DATA	TOTAL FAMILY UNIT MEMBERS 5,223
DECEASED 493 CLUB CANCELLED 172 OTHER 1,508 TOTAL 2,173	FAMILY MEMBERS PAYING HALF DUES 2,686		